

Spatial Data Infrastructure – Asia and the Pacific (SDI-AP) is a free electronic newsletter from the [Global Spatial Data Infrastructure Association \(GSDI\)](#) which is available in both English and Chinese language versions. The newsletter is produced for people interested in Spatial Data Infrastructure, GIS, remote sensing and geospatial data issues in Asia and the Pacific. It aims to raise awareness and provide useful information to strengthen SDI initiatives and support the synchronising these activities across the region. Support for the newsletter is also provided by the [Permanent Committee on Geographic Information for Asia and the Pacific \(PCGIAP\)](#), a regional forum to enhance cooperation in the development of a regional geographic information infrastructure. The newsletter is currently being produced for GSDI by the [Centre for Spatial Data Infrastructures and Land Administration](#) at the University of Melbourne.



To subscribe to SDI-AP use [this link](#). Back issues of the newsletter are at the [GSDI website](#). You can also sign up for [GSDI News List](#) to receive alerts of special news and announcements as well as notification of new issues of the SDI-AP newsletter. To subscribe and access archives of thematic or regional discussion lists [please visit](#).

Contents

Message from the editors	1
Contributions	2
SDI News, Links, Papers, Presentations	2
SDI Spotlight	3
GIS Tools, Software, Data	3
News from abroad	5
Articles	6
Books and Journals	11
Just for Fun!	12
Training Opportunities	13
Funding Opportunities, Awards, Grants	15
Employment Opportunities	16
Conference Proceedings	16
Conferences, Events	17

Message from the editors

Welcome to the July edition of the newsletter.

Please note that the GSDI organisation is currently planning for the GSDI conference and calling for Workshop and Tutorials — further information is available from [the GSDI website](#) and the Conference, Events section of the Contents of this newsletter.

If you have news or information related to SDI, GIS, RS or spatial data that you would like to share with the community (e.g. workshop announcements, publications, reports, websites of interest etc.), [kindly send us the materials by the 25th of the each month](#) for your contribution to be included in the next newsletter.

Malcolm Park and Serryn Eagleson ([Editors](#)), at the [Centre for Spatial Data Infrastructures and Land Administration](#), The University of Melbourne.

Contributions

Thank you to the following people and organisations for their contributions to this issue: Paul Box, Kate Lance, and Baek Wonkug for news feeds, Jeremy Shen and Jeremy Huang for the Chinese translation as well as Shivani Lal, GIS Development, Asia Surveying Mapping Magazine for directly contributing to the newsletter.

[Back to contents](#)

SDI News, Links, Papers, Presentations

[NGIS standards in Taiwan](#)

Up to 2010, 16 framework data standards have been approved by the NGIS Standardization committee in Taiwan. The responsible organizations of these 16 types of data are required to reexamine their application procedure and modify the supply mechanism using the OpenGIS technology. As the number of geospatial web service steadily increases in the past two years, the metadata standard (TWSMP) is currently under revise to additionally include service metadata. The draft of this revise procedure is expected to be completed this year and will be sent to the NGIS Standardization committee for further evaluation. To encourage the local GIS software developers or vendors to develop software supporting the reading and expanding the applications of the published NGIS data standard, a compliance test procedure for GIS product is under development this year. Source: MOI, Taiwan

[Custodianship Program / Spatial Data](#)

Custodianship of spatial information is the act of ensuring appropriate care in the collection, storage and maintenance of the information.

The Victorian Spatial Council is implementing the Custodianship Program to promote the principles of custodianship and increase the number of datasets being managed under formal custodianship arrangements. The first series of Fact Sheets and FAQs have been developed. These Web Pages will be further developed in the near future to provide further information and guidance.

Source: [Victorian Spatial Council](#)

[New Intergraph GeoMedia SDI Portal expands spatial data sharing to browser applications](#)

[Intergraph](#) has expanded its [spatial data infrastructure \(SDI\)](#) application with the introduction of GeoMedia SDI Portal to offer governments and other organizations new capabilities for empowering browser applications with SDI functionality. The new offering provides a Web browser application for consuming, querying and visualizing SDI Web services in a mapping context.

Source: [MundoGeo](#)

[Economic Growth Strategy Transformed Through a Spatial Data Infrastructure](#)

Making countrywide geographic data available throughout the nation with a spatial data infrastructure (SDI) is one way the country continues to grow. This article focused on Croatia demonstrates how an online geoportal created with GIS technology makes it possible to implement an economic growth strategy. The geoportal makes it easier for citizens, government, and private-sector users to find and access vast quantities of geographic information and related services. The geoportal is the first phase of a Croatian national SDI and has already shown its value by reducing the time it takes to register land within the country by 90 percent.

Source: [ESRI](#)

[The International Geospatial Society \(IGS\)](#)

The new individual member arm of the GSDI Association held its first presidential election recently by electronic ballot. We are very pleased and proud to announce that the first President of IGS is Mabel Alvarez from Chubut Province, Argentina. She teaches at the National University of Patagonia San Juan Bosco (UNPSJB) and has been the Director of Cadastre, Chubut Province, Argentina since 1983. Keeping this position, currently she is working at the Municipal Affairs Agency of the Provincial Government. The first Vice-President and President-Elect of IGS is Lilia-Patricia Arias from Bogotá, Colombia. She works for the National Mapping Agency of

[Back to contents](#)

Colombia (Agustin Codazzi Geographic Institute - IGAC) and is Chief of the Research and Development Center for Geographic Information.

We are pleased to have such exceptional talent leading the organization as it establishes initial working groups, plans and operating procedures for working with geospatial specialists with common interests from across the globe.

We wish to thank as well all the other excellent candidates that stood for election. We are off to a great start.

International Geospatial Society - <http://internationalgeospatialociety.org>

Mabel Alvarez - <http://www.giknet.org/registry/individual.php?id=41>

Lilia-Patricia Arias - <http://www.giknet.org/registry/individual.php?id=42>

[Back to contents](#)

SDI Spotlight

This month in the Spotlight we would like to direct readers to the European HUMBOLDT project. HUMBOLDT contributes to the implementation of a European Spatial Data Infrastructure (ESDI) that integrates the diversity of spatial data available for a multitude of European organisations. It is the aim to manage and advance important parts of the implementation process of this ESDI.

As outlined on the project website "the main goal of the HUMBOLDT project is to enable organisations to document, publish and harmonise their spatial information. The software tools and processes created will demonstrate the feasibility and benefits of an Infrastructure for Spatial Information in Europe as planned by the INSPIRE initiative (INSPIRE), meeting the goals of Global Monitoring for Environment and Security (GMES).

The technical goal of HUMBOLDT is to support Spatial Data Infrastructure (SDI) enablement by providing the functionalities for covering the data harmonisation process as a whole. The HUMBOLDT Tools and Services are built on current state of the art and standards, designed to provide solutions to all types of users, data custodians as well as private end-users. HUMBOLDT enables the use of single functionalities as part of your own infrastructure."

Learn more about HUMBOLDT from the project [website](#)

Source: [HUMBOLDT](#)



[Back to contents](#)

GIS Tools, Software, Data

[Mapping the Pacific Ocean](#)

Source: Asian Surveying & Mapping

[Surry Hills is city's hot spot of creativity, GPS study reveals](#)

Sydney (Australia) suburb SURRY HILLS is to Sydney's artists what Mecca is to the world's Muslims: all must pass through it at some point.

That's the preliminary findings of a study that "tagged" a group of designers with satellite technology and tracked their movements around Sydney, in an attempt to find out where the people who fuel Sydney's creative economy live, work and play.

Fifteen designers wore small GPS tracking devices, similar to the ones used in cars, for several days, which recorded their location every five seconds.

Source: *Sydney Morning Herald*

[Vietnam, Cambodia to complete border issues by 2012](#)

Vietnam and Cambodia have vowed to complete border demarcation and landmark planting along their common border by late 2012 as agreed previously by their top leaders. The agreement was reached during a special session in Phnom Penh on June 8 between the chairmen of the Vietnam-Cambodia Joint Committee on

[Back to contents](#)

land border demarcation and landmark planting. Both parties reviewed and discussed measures to speed up the work on land. Accordingly, a workshop will be held in Vietnam's Can Tho City in mid July 2010 to draw experience and complete the procedure for border demarcation and landmark planting. They also agreed to convene their upcoming meeting in Vietnam this September.

Source: [VOVNews](#) [thanks to Wonkug Baek for this item]

Resource Mapping of East China Sea Remains Tense

As countries have exhausted their terrestrial natural resource reserves, they are turning to sea-bed resources. Perhaps nowhere else in the world is this practice as politically charged as the East China Sea. Particularly contentious are surveying and mapping activities by Japan to explore natural gas resources in the region.

Source: Asian Surveying & Mapping

Beijing Census Will Count Siblings

The China population census is expected to commence in November, and there are plans this year to count all extra children in Beijing although they are a breach of China's family planning policy. The census will also include long-term overseas residents in an effort to consider foreigners in future urban planning efforts.

Source: [Asian Surveying & Mapping](#) & <<http://www.xinhuanet.com/english2010/>>

China's Regulations to Weed Out User-generated Maps

According to reports, the country's State Bureau of Surveying and Mapping announced last month that it would start issuing licenses to Internet maps providers in the country. Charice Wang, an analyst with Ovum's telecom regulation team, noted that the maps are also expected to be hosted on servers based in China. This means Google, which provides a maps service in the country but which recently moved its search service to Hong Kong after a dispute with the Chinese government, may be forced to stop including maps of China in its Google Maps service, she noted.

Source: [Asian Surveying & Mapping](#) & <<http://www.zdnetasia.com/>>

Cancer Maps: The Power of Geomedicine at Work by Bill Davenhall

Our interest in knowing more about our environment and what is happening around us got a big lift this month from the launch of a [web site](#) that features cancer data from the New York State Health Department's Cancer Registry.

Source: Huffington Post blog & [GIS Development](#) (June 14)

Pacific low-lying islands are growing, not shrinking

The latest research indicates that most of the Pacific's low-lying islands are growing, not shrinking, according to *The Australian*. Researchers Paul Kench, at the University of Auckland, and Arthur Webb at the South Pacific Applied Geoscience Commission (SOPAC) in Fiji, in a paper published in the journal *Global and Planetary Change*, challenge the established belief that Pacific islands are rapidly eroding away.

Source: [GIS Development](#) & *The Australian* newspaper

Map Makers respond to the Pakistan landslides

Pakistan: Jabran and Omer created a website, <http://www.local.com.pk/hunza/>, that uses the Map Maker API - for raising awareness about the series of landslides hit Atta Abad, in the Gilgit-Baltistan semi-autonomous region of Pakistan. They want to make disaster data more accessible and useful. The website is now recognised as a primary source of information for the Hunza disaster, and as such is being listed on the UN-Spider knowledge portal.

Source: [GIS Development](#) & [Google Lat Long blog](#)

(Editor's note: the Google Lat Long blog site is well worth visiting)

Transport body urges government to push GPS uptake (Australia)

The National Transport Commission (NTC) has called on the logistics industry to work cooperatively with Australian state and federal governments in formulating national standards for the implementation of in-vehicle telematics.

The technology, which helps to electronically monitor manage vehicle fleets, drivers and their loads, has already seen a wide up-take in some of the industry's larger players like Woolworths. However, smaller players are continuing to analyse whether the high cost of implementing such technologies provide cost benefits.

A [discussion paper released by NTC](#) states that better cooperation between government and industry would help to "support better safety, productivity and environmental outcomes". The call also comes in light of worries

[Back to contents](#)

that continued increases in logistics operators and the increasing size of truck fleets will have an averse affect on congestion, costs as well as air and noise pollution.

Source: www.networkworld.com [thanks to Wonkug Baek for this item]

[Deep thinking on the world's oceans](#)

The world's deep ocean researchers – scientists whose field of interest extends into the uncertain world below about 2000 metres – met in Hobart this week to discuss deep ocean changes, their causes and their implications.

Source: [Asian Surveying & Mapping](#) and CSIRO news release

[UN-SPIDER Office to be established in Beijing](#)

On the margins of the fifty-third session of the Committee on the Peaceful Uses of Outer Space, H.E. Ambassador Hu, Xiaodi, representing the Government of China, Mazlan Othman, Deputy-Director General of the United Nations Office at Vienna (UNOV) and Director of the Office for Outer Space Affairs (UNOOSA) signed an agreement to establish a new office of the United Nations Platform for Space-based Information for Disaster Management and Emergency Response (UN-SPIDER) in Beijing, China. The UN-SPIDER office in Beijing will contribute to the implementation of UN-SPIDER, in particular by raising awareness and supporting Governments, international and regional organizations through the provision of technical advice in the use and access of space-based information for disaster risk management and emergency response. The UN-SPIDER programme already has staff in Vienna, Austria, where UNOOSA is based, and also a UN-SPIDER office in Bonn, Germany.

Source: UN Information Service

[Social media and sentiment mining](#) – ABC Radio National “Background Briefing” Radio programme

27 June, 2010

While Google Maps is the subject of recent attention because of its acquisition of WiFi data and the threat to privacy, this recent radio programme investigates the “data mining” permitted by internet services such as Twitter, FaceBook, MySpace &c. These social media services and other Location Based Services undermine our privacy and (as an example) allow tech-savvy burglars to learn where and when we have left our residences:

Businesses and advertisers can already access enormous amounts of personal data on social media sites, from where you live to what you like. The next step is sentiment analysis, where online conversations are mined for words and thoughts, for a commercial advantage. Is this ethical, and could computers really sift sarcasm from enthusiasm?

See also: [Confessions of an online stalker](#) by New York blogger/journalist [Kashmir Hill](#) who set out to determine how much information was available online for someone seeking to research another person. This is pretty scary stuff !

[US Lawmakers grill Apple on location information gathering](#)

Key lawmakers want to know from **Apple** how it collects and uses information about the geography of iPhone and iPad users through location-based applications.

Source: Washington Post

[Thai Govt invests in GIS to end land disputes](#)

The Natural Resources and Environment Ministry, Thailand, has invested over 2.3 billion baht in the digital GIS as a major tool to settle land disputes between locals living in forests and the authorities.

Source: GIS Development & [Bangkok Post](#)

[Back to contents](#)

News from abroad

“This section has been included to highlight some of the developments happening outside the region which demonstrate SDI in action.

[COGO endorses geospatial education resolution](#)

The Coalition of Geospatial Organizations (COGO) endorsed a resolution urging the Obama Administration to take action to improve K-12 education in geography and geospatial skills. COGO endorsed a slightly modified

[Back to contents](#)

version of a similar resolution proposed by the Association of American Geographers, a COGO founding member.

Source: [GIS Development](#) & URISA Press Release

[Tracking the oil spill in the Gulf of Mexico](#) – *New York Times* dynamic map

- *New York Times* [Gulf of Mexico Oil Spill Multimedia Collection](#)
- [NOAA Emergency Response](#)
- [Google Crisis Response](#)
- [Miami Herald coverage](#) including [dynamic map](#)

SEE ALSO: [BP Oil Spill Provides Showcase for Earth Observation Satellites](#) (Spatial Sustain blog)

SEE ALSO: [Online Mapping Application for Deepwater Horizon BP Oil Spill](#)

A new U.S. federal website is live providing real time information about the Deepwater Horizon BP Oil spill into one customizable interactive map. The site integrates the latest data on the oil spill's trajectory, fishery closed areas, wildlife data and place-based Gulf Coast resources, such as pinpointed locations of oiled shoreline and daily position of research ships. The interactive map also includes data from Homeland Security, the Coast Guard, the Fish and Wildlife Service, EPA, NASA, US Geological Survey and the Gulf states. Visit the [Gulf Response Site](#)



- thanks to Wonkug Baek for this item

[Photogrammetry aids to reduce helicopter noise](#)

The test series, conducted from January to May 2010, was designed to gather data on the rotor blades and air movement that the blades create. Since most helicopter noise and vibration can be blamed on the interactions between the blades and the air. To avoid touching or interfering with the spinning blades, NASA used photogrammetry, to identify the blades' shape. It employed high speed cameras to take pictures of small reflective targets on the blades and the wind tunnel ceiling. On the rotor blade itself, more than 200 sensors were used to measure pressure that creates the rotor lift.

Source: [GIS Development](#) & [www.IndiaBlooms.com](#) news portal

[UN MDG Summit - September 2010](#)

As you may know, the UN is planning a summit meeting on the Millennium Development Goals. The web site is: <http://www.un.org/en/mdg/summit2010/>

You may want to see Luis Gutierrez's review and commentary on the information becoming available online:

At The UN MDG Summit ~ 20-22 September 2010 <http://www.pelicanweb.org/solisustv06n06page1.html>

Source: [Luis T. Gutierrez](#), The Pelican Web <http://pelicanweb.org>

[ISCGM releases 'Global Map of and around Guatemala'](#)

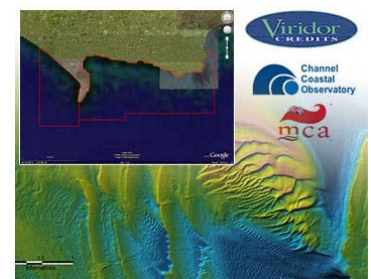
The Geospatial Information Authority of Japan (GSI), the International Steering Committee for Global Mapping (ISCGM) Secretariat which takes a central role of the Global Map data development project management, has released maps for the Guatemala region as part of the Global Map series. These include the latest areas where floods and landslides have occurred by the tropical storm Agatha. The map is prepared by using Global Map Data. These maps are freely available for non-commercial purposes. Global Mapping project is an endeavour advocated by the Ministry of Construction (present Ministry of Land, Infrastructure and Transport) in 1992 to develop a digital map (Global Map) covering the whole globe to accurately express the status of global environment, implemented in international cooperation of respective National Mapping Organizations (NMOs) of the world. The Global Map can be used for studying global environmental problems, etc. The details of the project are available at <http://www.iscgm.org/> and <http://www.globalmap.org/>.

Source: [GSI](#) [thanks to Wonkug Baek for this item]

[First UK Dorset Seabed map available online](#)

A seabed map of Dorset has become the first in the UK to be made freely available to the public on World Oceans Day, June 8. The Dorset Integrated Seabed (DORIS) study map displays contours, reefs, wrecks and rocky ledges, as well as many of the seabed's habitats from Abbotsbury to Swanage visible through linked photographs and species lists of multiple areas. It is available

[Back to contents](#)



through Google Earth. Users can zoom in on all parts of the map. It is mainly targeted at scientists, divers, marine planners and environmentalists. Peter Tinsley, marine conservation officer at Dorset Wildlife Trust, said, "This map marks a huge step for the marine environment. Already it has enabled us to find important wildlife hotspots and we want to continue pushing back the boundaries of knowledge about a part of the county that still holds many mysteries." The DORIS scheme has been undertaken by Dorset Wildlife Trust, the [Maritime and Coastguard Agency](#) (MCA) and Channel Coastal Observatory. Environmental company Viridor Credits provided a major biodiversity grant of GBP 300,000 (EUR 362,135) through the Landfill Communities Fund. The map will be used by MCA to update navigation charts, by the Channel Coastal Observatory to offer information to coastal engineers and by the Dorset Wildlife Trust to identify significant and vulnerable seabed habitats.
Source: [FIS](#) [thanks to Wonkug Baek for this item]

[US Lab develops new agricultural carbon accounting method](#)

Carbon dioxide emissions from agricultural activity in the United States can now be tracked with unprecedented resolution, according to Oak Ridge National Laboratory (ORNL). A team led by Tristram West, a member of ORNL's Environmental Sciences Division, used satellite remote sensing, computational resources and high-resolution national inventory datasets to pinpoint agricultural-based carbon emissions nationwide.
Source: [GIS Development](#) & ORNL news release & [Ecological Applications journal](#)

[United States of America - Library of Congress to Develop Geospatial Data-Preservation Clearinghouse](#)

The Library of Congress and Columbia University announced an agreement to create a web-based clearinghouse of information about best practices for preserving significant geospatial data. The Library's National Digital Information Infrastructure and Preservation Program (NDIIPP) will fund development of the clearinghouse at the Center for International Earth Science Information Network (CIESIN) at Columbia's Earth Institute. CIESIN will launch a beta version of the clearinghouse later this year. "The geospatial community has told us that a clearinghouse to communicate preservation best practices is essential for keeping these information resources available around the nation," said Laura Campbell, associate librarian for Strategic Initiatives. The clearinghouse is a direct outcome of a meeting held at the Library with representatives of the geospatial stewardship community in November 2009. At the meeting, experts discussed ways to frame a national preservation and access strategy for geospatial data that is at high risk of loss. Discussions centered on ideas for practical steps that could be undertaken quickly and would have broad impact on capabilities for long-term data management. For more information, please read [press release](#).

- thanks to Wonkug Baek for this item

[World Cup 2010 Begins - Maps, Cartography and Images](#)

Source: Asian Surveying & Mapping

[Scientist to estimate pre-Columbian Amazonian population](#)

University of New Hampshire tropical ecologist, Michael Palace, has been awarded a USD 364,000 grant from NASA's Space Archaeology Program to estimate the population of pre-Columbian indigenous peoples in the Amazon Basin lowlands by means of satellite remote sensing technology. Currently, population estimates vary widely – from 500,000 to 10 million – and are the subject of controversy and debate. Among other things, knowing with more accuracy how many people might have impacted the rainforest through agriculture and development prior to European contact will help scientists understand how the Amazon Basin might withstand current pressures from deforestation, selective logging and development.
Source: [GIS Development](#) & Univ New Hampshire press release

[Hyperspectral imager to tackle counterinsurgency](#)

The US Air Force Space Command announced that the TacSat-3 spacecraft, which carries the advanced responsive tactically effective military imaging spectrometer, or ARTEMIS, will be upgraded from an experimental to an operational satellite.

Military remote sensing satellites have traditionally been used on the strategic level, and their capabilities are not available to small units. Hyperspectral sensors, already used on some unmanned aerial vehicles, see variations in colours undetectable by the human eye. They can search for disturbed earth where an enemy has buried a roadside bomb, for example.

Source: [GIS Development](#) & [www.NationalDefenseMagazine.org](#)



[Maps of five centuries digitally archived](#)

Over 3,200 historic maps of North Carolina are now available online as part of the Digital North Carolina Maps Project. North Carolina Maps contains more than 3,000 maps, ranging in date from the late 1500s to 2000 and including detailed maps for each of North Carolina's one hundred counties.

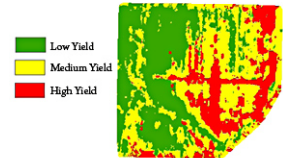
Source: GIS Development & [Univ North Carolina library](#)

[LiDAR for better use of fertilizers](#)

A new way to make topographic maps with LiDAR (light detection and ranging) can help farmers divert more of their resources to the highest-yielding parts of their fields, according to an Agricultural Research Service (ARS) scientist. James McKinion, an electronics engineer at the ARS Genetics and Precision Agriculture Research Unit at Mississippi State, did the study with entomologist Jeff Willers and geneticist Johnie Jenkins at the ARS unit in Mississippi.

With the maps fed into computerised, variable-rate fertiliser applicators, precision farmers can divert more of their costly fertiliser to the highest-yielding zones and the least to the lowest-yielding zones. They can also use the zone maps to make other decisions, such as planting more drought-tolerant varieties in low-yield zones, or sowing less seed.

Source: [GIS Development](#) & [US Dept of Agriculture](#)



[Free geographic data helps reveal Great Britain's "fraud landscape"](#)

OS OpenData, Ordnance Survey (OS) mapping data are now freely available for financial services companies to help identify patterns in fraud and aid intelligent decision making. To demonstrate the potential, OS has created a series of fraud maps that match statistics from a leading industry body to their geographic locations. The result is a striking and revealing representation of the peaks and troughs of the British fraud landscape.

Source: [GIS Development](#) & Ordnance Survey news release

[Technology's Disaster Clock](#) by Edward Tenner

Do major engineering catastrophes follow a schedule? What the timing of large bridge collapses may say about the cause of the BP Mexican Gulf oil spill.

Source: www.theAtlantic.com

[Space Station monitors world's sea traffic](#)

As the International Space Station (ISS) circles Earth, it has begun tracking individual ships crossing the seas beneath. An experiment hosted by European Space Agency's (ESA) Columbus module is testing the viability of monitoring global traffic from the Station's orbit hundreds of kilometres up.

The ship-detection system under test is based around the Automatic Identification System (AIS), the marine equivalent of the air traffic control system. All international vessels, cargo ships above certain weights and passenger carriers of all sizes must carry 'Class A' AIS transponders, broadcasting continually updated identification and navigation data.

Source: [GIS Development](#) & European Space Agency (ESA)

[NASA demonstrates GPS tsunami prediction system](#)

A NASA-led research team has demonstrated a prototype for an improved GPS-based tsunami prediction system. The agency said that the team, led by Y. Tony Song of NASA's Jet Propulsion Laboratory (JPL) in Pasadena, California, used real-time data from the agency's Global Differential GPS (GDGPS) network to successfully predict the size of the tsunami triggered by the February 27 magnitude-8.8 Chilean earthquake. The network, managed by JPL, can detect ground motions as small as a few centimetres. Song said, "This successful test demonstrates that coastal GPS systems can effectively be used to predict the size of tsunamis. This could allow responsible agencies to issue better warnings that can save lives and reduce false alarms that can unnecessarily disturb the lives of coastal residents."

Source: [GIS Development](#) & NASA

[See also Remote Sensing Provides New Tools for Earthquake Assessment and Prediction](#)

New airborne remote sensing techniques and tools are helping scientists gain a better understanding of earthquakes. Airborne sensors provide the advantage of being able to cover a great deal of ground, and through repeated visits they give in-depth picture of change across an entire fault line. Remote sensing also provides a reliable means to augment the network of ground sensors to provide a different perspective.

[Back to contents](#)

A science team at NASA's Jet Propulsion Laboratory in California has been using the Uninhabited Aerial Vehicle Synthetic Aperture Radar (UAVSAR) to measure surface deformation from earthquakes. The radar produces [map images](#) that are called interferograms that show ground motion and increased strain along fault lines. By comparing imagery collected over time, the scientists are able to better understand the complex geology of these regions. Through continued observation, particularly after a quake event, the scientists can determine how strain alters across a fault line, and can help determine if massing of strain along the fault is occurring, priming them to break. The UAVSAR sensor shows details at a much finer granularity than any other type of sensor.

Interesting research is taking place throughout the world to help determine a reliable precursor for earthquake detection.

Source: Asian Surveying & Mapping

[GPS finds new crowd-control and medical applications](#)

Global positioning systems (GPS) have become commonplace to help drivers reach their destinations using satellites. But a young Hebrew University of Jerusalem researcher has shown that GPS can have other uses as well, such as controlling crowds or the movement of shoppers, and even evaluating patient recovery after surgery.

Source: Jerusalem Post

[Singapore keen to open spatial data](#)

Singapore government has decided to make more spatial data public to encourage the creation of innovative services for citizens and businesses. This initiative comes under one of three strategic thrusts, the co-creation of higher value services of the country's new e-government masterplan 2011 - 15.

Source: [GIS Development](#) & ZDNet

[GIS for numbering of buildings](#)

GIS-based numbering of buildings and establishments in the country would be completed soon, according to Nasser Saleh al Muhanadi, head of coordination and training in GIS Centre, Ministry of Municipalities and Urban Planning, Qatar.

The plates are made of anodised aluminum covered with a substance resistant to weather conditions and approved by the Qatar's Bureau for Standards and Measurements. The plates have tags of radio-frequency identification (RFID) connected to the main database in GIS centre which is also linked to more than 60 authorities in the country.

Source: [GIS Development](#) & Qatar Tribune

[Digital map of the world is the product of a large-scale volunteer effort](#)

Numbers of volunteer cartographers worldwide in OpenStreetMap has reached 240,000. They are trying to create a digital map of every street in every city and village on the planet. It is a kind of grass-roots Wikipedia for maps that is transforming how map data are collected, shared and used — from the desktop to smart phones to car navigation.

Source: [GIS Development](#) & LA Times

[Predicting Traffic Jams](#)

IBM is developing a new traffic analysis system that can [predict where traffic jams](#) will occur before the driver finds him or herself stuck in one. The system uses predictive modeling, incorporating data from road sensors, weather conditions, historical traffic data, and real-time GPS data from taxis. Road tested in Singapore, Finland, and New Jersey, the system has been able to accurately predict traffic volume 85% to 93% and travel speeds 87% to 95% of the time. The modeling system can predict the occurrence of a traffic jam one hour before it occurs. Read more: [Predictive Modeling Warns Drivers One Hour before Jams Occur](#)

Source: GIS Lounge

[Louisiana Governor's Office Releases Louisiana Earth](#) (United States)

The Governor's Office of Homeland Security & Emergency Preparedness (GOHSEP) recently announced release of the first public version of Louisiana Earth, an emergency planning resource to provide public access to near real time mapping information during disasters. The application relays critical information on response and recovery efforts for the Deepwater Horizon Rig incident, providing the latest oil sightings, oyster bed and fishing closures, protective coastal booms, bird-nesting areas, and demographic information on affected coastline communities.

[Back to contents](#)

Source: [V1 Magazine](#)

Articles

[The love/hate relationship with GIS \(Part 1\)](#) by Bjorn Dandvik of Thematic Mapping blog
[The love/hate relationship with GIS \(Part 2\)](#)
[The love/hate relationship with GIS \(Part 3\)](#)

Geoliteracy

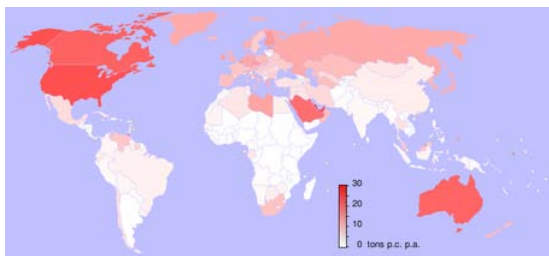
It is interesting to note that organisations in the US have urged the President to take steps to recognise the importance of geography in the education system. This is a move other countries also need to emulate. Geography education has become skewed in favour of the softer social sciences. The rigorous mathematical underpinning of physical geography is neglected and as a result such geographers are at sea with modern tools such as GIS and GPS. On the other hand hard core science and engineering syllabi tend to gloss over geography except perhaps in the fields of Civil engineering and Geology. Thus when IT and Computer Science graduates gravitate to the geospatial field by virtue of their digital expertise, they are not aware of the complications of applying their knowledge to solving geographical problems. We have to stop putting subjects in sealed bins and allow students to pick and choose subjects in their course of studies. While this is possible in some educational systems I believe it not to be the case in countries like India. There are many fields like geospatial technology that require cross-discipline knowledge and understanding. Modern education systems need to be able to meet such needs.

Prof Arup Dasgupta

Source: Editorial, GIS Development (7 June)

What the World's Carbon Emissions Look Like by Derek Thompson

This map, courtesy of Ezra Klein's [Wikipedia](#) search, shows carbon emissions per capita by country.



If the countries in the deep red don't put a price on carbon, he notes, developing countries will reply that it's unfair for the us to get rich off cheap energy and say nobody else can do the same.

That sounds right. But to me, the most alarming thing about this graph isn't what's red, but rather what isn't red yet. China and India are home to about 2.5 billion people. That's equal to the population of the largest deep red nations -- United States, Canada, Saudi Arabia and Australia -- times seven.

Source: [The Atlantic Monthly](#)

The 2010 BBC Reith lectures (by the Astronomer Royal Lord Martin Rees) now available.

- #1: The Scientific Citizen - Prof Martin Rees asks who we should trust to explain the risks we face.
- #2: Surviving the Century - Does science have the answers to help us save our planet?
- #3: What we'll never know - Professor Martin Rees explains where the limits of our scientific knowledge lie.
- #4: The Runaway World - Prof Rees calls for the UK to stay at the forefront of scientific research and discovery.

What If Captain Cook Made an Atlas With Geomatics Technology Today? by Jeff Thurston of V1 Media

This article includes links to: [Engines of Our Ingenuity — The First Atlas](#); [Wiki — French Explorer Samuel de Champlain](#); and [The 1562 Map of America by Spanish Explorer Diego Gutiérrez](#)

The Deepwater Horizon Spill Illustrates the Need for Full Context

by Mark L. Feldman and Margot Rudell

Source: V1 Magazine

[Back to contents](#)

Books and Journals**New ESRI Press Book Highlights SDI Efforts in Europe**

Redlands, California - June 10, 2010 - [Building European Spatial Data Infrastructures, Second Edition](#), published by ESRI Press, details the European Union's (EU) ongoing efforts to develop comprehensive, multinational spatial data infrastructures (SDIs). Designed as a reference for geographic information system (GIS) professionals and decision makers, the new edition promotes a general understanding of SDI concepts and provides examples of practical applications.

Source: [Spatial News](#)

SERVIR-Africa community news - entries posted in May 2010

- Now available for download: South African Risk and Vulnerability Atlas

UN SPIDER (May 2010) Newsletter and Updates

SpaceAid: Supporting response to earthquakes in Chile and China
Feature: Technical Advisory Missions to Small Island Developing States
Outreach: Colombia, Nairobi, Bangkok
Case Study: CATHALAC environmental mapping for Guatemala
Network: New RSOs CATHALAC, SUPARCO, SRI NASU/NSAU

May 2010 UPDATES

1. SpaceAid support to Guatemala, Pakistan, Tajikistan, and Kenya
 2. Focus on user requirements at CEOS/WGISS-29 Meeting in Bonn
 3. UN-SPIDER supporting the establishment of a crop-monitoring project in Guatemala
 4. Fostering the SPIDER Thematic Partnership for Latin America and the Caribbean
 5. UN-SPIDER at the Workshop on Space-Technology Applications in Disaster Risk Reduction in Beijing
 6. UN-SPIDER Technical Advisory Mission to Maldives
 7. NOAA updates its GPS system
 8. NASA Awards Global Precipitation Measurement Microwave Imager
 9. Measuring the height of volcanic ash
 10. Gulf of Mexico oil spill in the Loop Current
 11. UN campaign to make cities more resistant to disasters
- <Conferences and Workshops>

ILS White Paper Examines Torrens System in U.S.

International Land Systems (ILS), Inc. in conjunction with the Property Records Industry Association (PRIA) today released a white paper titled "[The Earthen Vessel: Land Records in the United States](#)," detailing different types of land records including the advantages of the Torrens land registration system. ILS President Peter Rabley and ILS Senior Legal Advisor Justin T. Holl, Jr. explain the effectiveness of the Torrens system in the white paper. Because land records are associated with specific parcels instead of individuals under the Torrens system, searches related to land parcels are far more efficient. Also, geographic information, including maps, digital or otherwise, can be shared easily.

Source: ILS

The Look of Maps: an Examination of Cartographic design

Esri Press is proud to expand its cartographic classics series with [The Look of Maps: An Examination of Cartographic Design](#) by Arthur H. Robinson. The series also includes *Cartographic Relief Presentation* by Eduard Imhof and the soon-to-be-published *Semiology of Graphics* by Jacques Bertin. Originally published in 1952, *The Look of Maps* is based on Robinson's doctoral research, which investigated the relationship between science and art in cartography and the resultant refinement of graphic techniques in mapmaking to present dynamic geographic information.

The book examines a wide range of topics related to the visual aspects of cartography including lettering, structure, and color. It is considered by many to have inspired the shift in cartographic research from the simple production of maps to communication and design theory.

Robinson authored and coauthored many influential articles and books on cartography including *Elements of Cartography*, *The Nature of Maps*, and *Early Thematic Mapping in the History of Cartography*. In addition, he developed the Robinson projection, which is used to create visually appealing maps of the world by minimizing the distortion inherent in projecting a spherical image onto a two-dimensional plane. *The Look of Maps* is a

[Back to contents](#)

fundamental reference for students and professionals in the field of cartography and cartographic design as well as being an essential resource for map libraries.

[*The Look of Maps: An Examination of Cartographic Design*](#) (ISBN-13: 9781589482623, 124 pages, \$39.95) is available at online retailers worldwide, at www.esri.com/esripress, or by calling 1-800-447-9778. Outside the United States, visit www.esri.com/esripressorders for complete ordering options, or visit www.esri.com/distributors to contact your local Esri distributor.

This review from [V1 Magazine](#)

[**Manual of Geospatial Science and Technology**](#) by John D. Bossler, James B. Campbell, Robert B. McMaster, & Chris Rizos – reviewed by Jeff Thurston of V1 Magazine

[**Building European Spatial Data Infrastructures**](#) by Ian Masser

This book explores the efforts of the European Union (EU) to create a framework for a multinational infrastructure for spatial information in Europe (INSPIRE). This framework will enable the EU to exploit the myriad opportunities created by modern GIS technologies. In its second edition, this book presents an overview of the innovative activities being performed by both the public and private sector to comply with the INSPIRE Directive, and explains the rationale and the processes involved in SDI development and implementation. Designed as a reference for GIS professionals and decision makers, this book promotes a general understanding of SDI concepts and provides examples of practical applications.
ISBN: 9781589482661 2010 108 pages \$34.95

[Back to contents](#)

Just for Fun!

[**Woman Claims in lawsuit that Google Maps Made Me Walk Onto the Highway**](#)

In my opinion, mapping software paired with GPS technology is one of the more remarkable developments of the modern age, but you know what? You do still need to look where you're going occasionally. Please remember this if you are out for a walk this fine Memorial Day.

From OverLawyered.com: Lauren Rosenberg of Los Angeles "is suing Google because Google Maps issued directions that told her to walk down a rural highway. She started walking down the highway — which had no sidewalk or pedestrian paths — and was struck by a car."

Note that Para 8 of the Complaint pleads that "At all times [the Plaintiff] was and is a competent adult". Original Complaint available at <<http://www.scribd.com/doc/32136379/Rosenberg-v-Harwood-Google>>

Source: [LoweringTheBar.net](#) & [OverLawyered.com](#)

SEE ALSO: ["It Wasn't Me, Officer! It Was My GPS. What happens when we blame our navigation devices for our car crashes" by Tom Vanderbilt](#)

The GPS-assisted crash has become an occasional—and eyebrow-raising—staple of news coverage: Every few months, one hears about a driver faithfully obeying the "turn by turn" instructions of an in-car navigation system, only to find him- or herself in trouble when the actual traffic landscape fails to conform.

Editor's Note: while we may derive amusement from those who get themselves into trouble by unquestioningly following Google or GPS devices, Vanderbilt's article describes experienced pilots flying simulated Boeing 727s who completed landings using heads-up guidance *without* noticing the rather conspicuous presence of a large jet turning onto the runway.

Source: www.Slate.com

[**Plants Text Message Farmers When Thirsty**](#)

Beginning this crop season, farmers will be able to receive text messages on their cell phones from their plants saying whether they are thirsty or not.

Source: US Dept of Agriculture

[**Presentation Blues - fed up to your back teeth with inane PowerPoint presentations ??????**](#)

Why do people still travel the world to conferences? Jeremy Wagstaff says its for that cuddly warm, person to person feeling.

Source: [Jeremy Wagstaff's LooseWire blog](#) & BBC World Service Business Daily [podcast](#) (Wed, 23 June

Editor's note: the [LooseWire blog](#) is an entertaining site discussing modern technology

[Back to contents](#)

[Hand drawn Map Association](#) website

[Back to contents](#)

Training Opportunities

[Master's Program in Photogrammetry and Geoinformatics at Stuttgart, Germany](#)

International Master's Course Photogrammetry and Geoinformatics offered by Hochschule fuer Technik Stuttgart, Germany

Tuition and Fees - 613 Euro for each semester

Please contact with Prof. Dr. D. Schroeder, phone +49 711 8926 2612, fax +49 711 8926 2556

[email](#)

[NEW Master's, Diploma & Certificate Courses in Cartography & Mapping](#)

The Department of Geographical & Earth Sciences, University of Glasgow, UK has added TWO new MSc courses to its **Post-Graduate Taught Programme for Cartography and Mapping**:

1. Applied Population & Statistical Mapping 2. Landscape Monitoring & Mapping

Existing courses include: Geoinformation Technology & Cartography, Geospatial & Mapping Sciences

Details and contact information can be found at: <<http://www.ges.gla.ac.uk:443/degrees/postgraduate/courses>>

The Courses begin in SEPTEMBER 2010. A limited number of Scholarships will be available for all of these programmes.

Master's courses may be available full or part time, it may also be possible to study for a Postgraduate Diploma or Certificate, or take specific courses or sub-units as CPD.

[United Nations University and ESRI to Collaborate on GIS Research and Training](#)

ESRI and United Nations University (UNU) recently approved a memorandum of understanding (MOU) at the university's headquarters in Tokyo, Japan. They will collaborate on research, create Centres of Excellence, promote the exchange of graduate students and provide GIS training opportunities within and by UNU.

Source: GISLounge

[The New Professional Spatial Information Programs at the University of Melbourne](#)

Master of Engineering (Geomatics)

Master of Spatial Information Science

This item was extensively covered in [Volume 7, issue 3 \(March 2010\)](#) of the SDI-AP newsletter and is here reprinted in abbreviated form.

[Forestry GIS User Group Opens for Membership](#)

ESRI has launched a new user group specifically for its forestry and timberland management customers. The newly formed ESRI Forestry Group (EFG) will build opportunities for foresters to learn about business solutions, network with like-minded professionals and develop professional growth.

Source: Vector1Media

[UNIGIS MSc now in Australia](#)

The international UNIGIS MSc postgraduate degree is now offered in Australia through the UNIGIS study centre at the University of Canberra, ACT. Students are invited to enrol in a joint program combining the capacities from the University of Canberra and University of Salzburg, Austria.

This new UNIGIS study centre is led by Prof. George Cho at the Institute of Applied Ecology, University of Canberra. The program offers in-service distance education for professionals interested in GIS and Geoinformatics. Courses towards the MSc were launched with an on-site workshop in 2009 and lead students to obtain recognised international academic degrees.

Source: <http://www.unigis.net>

[Trimble Seminars](#)

Trimble will launch a new series of web seminars for people with an interest in GPS and GIS. They will be offered every 4-6 weeks. The schedule for upcoming 'webinars' includes: an introduction to the new Yuma rugged tablet computer and VRS. Visit the [Trimble website](#) for more information.

Source: [Asian Surveying & Mapping](#)

[Back to contents](#)

[Web Map Gallery](#)

[Web Map Gallery](#) | [Contribute Web Map](#)

Web Map Gallery is a resource for readers to see what others geospatial professionals have created. We encourage you to contribute to the gallery so that all may benefit from the breadth of geospatial applications now being used in many industries. Please feel free to use the link "Contribute Web Map" above to add your own Internet-based mapping application with as much information as necessary to explain your contribution.

Source: [Directions Magazine](#)

[GIS software training by ESRI](#)

ESRI now offers access to more than 40 beginning, intermediate and advanced instructor-led GIS courses through a variety of training alternatives and venues including

- Video teleconferencing training at the ESRI learning centers
- Virtual Classroom **online training delivered to students' own workplaces or home computers**

Source: GIS News

[ESRI Training Program](#)

ESRI in Singapore has released its training schedule for the first part of 2010, up to next February. Seats are reserved on a first come, first served basis, upon registration. Training prerequisites will be as indicated in the course notes. For course outlines, contact [ESRI](#) direct.

[Geospatial technology update seminars scheduled for SE Asia](#)

ESRI and GIS Development will present free seminars to mapping agencies in Southeast Asia. The Geospatial Technology Update seminars will take place in Jakarta, Indonesia; Bangkok, Thailand; Hanoi, Vietnam; Kuala Lumpur, Malaysia; and Manila, Philippines. The seminars commenced January 2010. The seminars will outline technology trends in the geospatial community including how to take advantage of the Web 2.0 environment, the integration of topographic and remotely sensed data and how to best offer published data via cloud computing.

Mapping organisation staff members and managers and their affiliates, including national hydrographic and aeronautical agencies, are invited to attend the free, daylong program in their respective cities. For more information and to register, visit <http://www.GISdevelopment.net/GTUS>. For more information on how mapping agencies use GIS software, visit www.esri.com/maps

[FOSS 4G 2010 Workshops - Barcelona, Spain. – Workshop webpage](#)

This item was extensively covered in [Volume 7, issue 3 \(March 2010\)](#) of the SDI-AP newsletter and is here reprinted in abbreviated form.

September 6 Workshops (Monday afternoon, 15-18h)

- W-01: Web mapping with GeoServer
- W-02: gvSIG 1.9 user workshop
- W-03: Setting up an OpenStreetMap rendering toolchain
- W-04: Introduction to PostGIS
- W-05: Introduction to the Mapbender geoportal framework
- W-06: Solid web mapping with Python
- W-07: Practical introduction to ZOO, the powerful WPS platform

September 7 Workshops (Tuesday morning, 9-12h)

- W-08: Getting started with MapServer
- W-09: Quantum GIS and PostGIS: Solving spatial problems and creating web-based analysis tools
- W-10: FOSS4G routing with PgRouting tools, OpenStreetMap road data and GeoEXT
- W-11: Working with OpenLayers
- W-12: GeoNetwork for dummies, or how to setup an SDI in 3 hours
- W-13: Geospatial for java
- W-14: Practical introduction to GRASS

[FOSS 4G 2010 Tutorials - Barcelona, Spain. – Tutorials webpage](#) (7 – 9 September)

Source: [FOSS4G 2010 press release 5](#)

[Transparency in Land Administration - \(2 weeks\) - Ardhi University TANZANIA \(18 – 31 November, 2010\)](#)

Course objectives:

[Back to contents](#)

Transparency in land administration is a critical factor and a precondition for enhanced good governance. It is also a major step towards elimination of corruption in land administration. The objectives of this course are;

- To share innovative tools to achieve tenure security and transparency in land administration;
- To enhance participants' awareness and understanding of transparency, disclosure management and flow of information in land administration matters; and
- To inculcate knowledge on tools required to engender and operationalise and monitor transparency in land administration.

[5th Thailand GIS for Disaster Risk Management Course](#) Bangkok, Thailand, 16-27 August

[Back to contents](#)

Funding Opportunities, Awards, Grants

[Trimble Student Paper Competition for Surveying](#)

Trimble is holding its 2010 Surveying Student Paper Competition. The winning student author will have the opportunity to present their survey application paper at Trimble Dimensions 2010 in Las Vegas, Nevada. The winner will receive a trip to the conference plus 3 nights' accommodations to take part in Trimble's internationally recognized conference with surveying professionals from around the world. In addition, the winning student's school will also receive a Trimble® R8 GNSS System.

How to Enter: (Full details at the [Competition web page](#))

To enter, submit your completed entry form below with a written paper of 1500 words or more. The paper must describe an application and use of Trimble Survey equipment. All papers must be submitted in the English language, in Microsoft Word format.

All entries must include the student's name, student's address, student's email address, University name and address in order to be eligible for the competition.

Entries will be accepted from June 14th until August 15th, 2010. Judging of entries will occur from August 16th, 2010 to September 21st, 2010. The announcement of the winner will be September 22nd, 2010.

[Wanted: Innovative Ideas for Applications in Satellite Navigation €20,000 grand prize](#)

The seventh European Satellite Navigation Competition (ESNC) has commenced its search for applications in satellite navigation at <www.galileo-masters.eu>. Until the end of July, innovators all over the world will have the chance to develop their ideas for new products and services based on satellite positioning.

[ESRI's Mashup Challenge Winners Announced](#)

Links to the winning mashups and related videos can be found at <http://www.esri.com/apimashup>.

Source: [Directions Magazine](#)

[Asia - RS and GIS Scholarships](#)

Remote Sensing and GIS field of study at Asian Institute of Technology (Thailand) has recently announced scholarships for this coming August 2010 semester. These scholarships will be granted to students who have excellent study records. Please take your chance to apply for this scholarship.

[MapGuide Project Sponsorship Program](#)

The MapGuide Project Steering Committee is pleased to announce the MapGuide Open Source Project Sponsorship and Donation program. This program provides a source of funding to help ensure the continued success of MapGuide Open Source. The full details of the program are available at the URL link above.

Source: [OSGeo](#)

[NAVTEQ Global LBS Challenge](#)

Registration for all Regions is now CLOSED

Registration for all five regions is now closed. You can view the remaining key dates for each region on the 2010 [LBS Challenge calendar](#). View photos and videos from the award ceremony of each region on the 2010 [LBS Challenge Gallery](#).

[Back to contents](#)

Earn a PhD in Fuxin

Professor Xu Aigong is seeking PhD students to study under him at Liaoning Technical University in Fuxin, China. His subjects of interest include geodesy and geomatics, GNSS, GIS and intelligent transportation systems. Students may be eligible for support under the 2010 Liaoning Provincial Government Scholarship Program. Email [Prof. Xu](mailto:Prof.Xu) for details

ICIMOD Photo Contest on Mountain Biodiversity

ICIMOD is organising a Photo Contest on 'Mountain Biodiversity' to mark the International Year of Biodiversity 2010 and raise awareness of the vital role that mountain biodiversity plays in sustaining life in the Hindu Kush Himalayan region and beyond. The themes of the competition reflect the theme of the [International Year of Biodiversity 2010](#) 'Biodiversity is life. Biodiversity is our life', and the theme for the [International Day for Biological Diversity 22 May 2010](#) 'Biodiversity, Development and Poverty Alleviation'.

Regional Scope

To qualify for the competition, images must be taken within the Hindu-Kush Himalayan portion of ICIMOD's regional member countries - Afghanistan, Bangladesh, Bhutan, China, India, Myanmar, Nepal, and Pakistan - as shown in the [ICIMOD regional map](#).

ESRI Australia supports Spatial Technology in Schools competition

ESRI Australia is proud to once again support the annual Spatial Technology in Schools competition. The competition sees students from across Australia use GIS technology in challenging, informative and fun ways to assist in solving a problem from any area of the curriculum.

The competition is conducted in each State and Territory of Australia, and New Zealand, with a prize awarded for the best project in each region. The winners of each region are then judged to determine the Regional Winner.

ESRI Australia is providing free ArcGIS software licences for schools entering in the competition. By using the same software that is used by millions of GIS professionals around the world every day, students will gain real insights into how GIS is used to solve real-world issues.

Participating schools can request their free licence by visiting www.esriaustralia.com.au/esri/6176.html or by contacting ESRI Australia Connect via email at connect@esriaustralia.com.au.

[Back to contents](#)

Employment Opportunities

Spatial Jobs Online (Australia) Because of tight application closing dates the editors provide these websites for employment seekers to access directly: < <http://www.spatialjobs.com.au/> > and < <http://www.GISjobs.com.au> >

Looking for a GIS - Geomatics Job in Canada?

Here are some links: 1) [Geomatics Canada Job Site](#); 2) [GeographyJobs.ca](#); 3) [GoGeomatics Canada](#); 4) [Geomatics Employment Center](#)

Source: V1 Magazine

[Back to contents](#)

Conference Proceedings

[Live webcasts of the Second Open Source GIS Conference - 22nd June 2010](#)

[Report on the Fourth Central Asia GIS Conference](#)

[The 16th Session of the Asia-Pacific Regional Space Agency Forum \(APRSAF-16\)](#)



The **[24th FIG International Congress 2010](#)** (Sydney, 11-16 April) has now concluded and the papers from the [Technical Proceedings](#) and the [Meeting Programme](#) are now available.

[Back to contents](#)

[2010 ESRI Developer Summit 22-25 March](#)

View the [plenary demos](#) and [tech session videos](#). More technical information is going to be posted so check back for this additional information.

Source: [ESRI](#)

[5th gvSIG Conference Proceedings available](#)

The videos of the report sessions and workshops at the 5th gvSIG Conference, held the first week of December 2009, are now available.

All the videos are available with English and Spanish audio. They are available to be downloaded directly as well as online.

With this publishing, we pretend to bring the Conference closer to the interested people that could not attend the event, having the possibility to access to the recording of the different sessions.

[2010 NSGIC Midyear Conference Archive Published](#)

The National States Geographic Information Council (NSGIC) hosted the 2010 NSGIC Midyear Conference on March 7-10, 2010 in Annapolis, Maryland, USA. The NSGIC is an organization committed to efficient and effective government through the prudent adoption of geospatial information technologies (GIT). The archive of [PowerPoint presentations](#) and other materials from the 2010 NSGIC Midyear Conference, is now available. The archive includes the [final on-site agenda](#) (PDF) as well as the final attendance roster (PDF) from the conference. [NSGIC's on-line conference](#) archives include materials from the 1999 Midyear conference to the present.

Source: <http://news.nsgic.org/> & Wonkug Baek

[The Australian and New Zealand Map Society Conference 2010](#)

[Back to contents](#)

Conferences, Events

For upcoming events of global or major international interest, please visit the [upcoming conference list](#) on the GSDI website.

The editors welcome news of conferences & events from the newsletter subscribers

Date	Location	Event
July 2010		
5 – 7 July	Vienna	100 Years ISPRS: Call for Papers Organisers of the ISPRS Commission VII Symposium (5-7 July 2010, Vienna) are inviting papers relating to the theme, 100 Years ISPRS – Advancing Remote Sensing Science. They are particularly seeking contributions that critically review major research areas in remote sensing. The deadline for full-paper review is 28 November 2009. The deadline for abstract-only review is 28 February 2010.
5 – 7 July	Barcelona, SPAIN	EDULEARN10, the International Conference on Education and New Learning Technologies Abstract submission: 1st April 2010 Acceptance notification: 22nd April 2010 Final Paper submission: 20th May 2010 For more information CONTACT NOTE - You can present your projects in two modalities: <ul style="list-style-type: none"> • In person: oral and poster presentations. • Virtually: if you can not attend in person
5 - 11 July	Tomsk, Russia	International Conference (and Early Career Scientists School) on Environmental Observations, Modeling and Information Systems (ENVIROMIS-2010) Program
“NEW”		
6-9 July	Salzburg, Austria	GI Forum 2010 The organisers of the GI Forum 2010 in Austria have issued a call

[Back to contents](#)

		<p>for papers for the conference, which will be held 6-9 July. The conference theme is spatial assessment and analysis of vulnerability. Workshops will be held prior to the conference on 6 July. email</p> <p>IMPORTANT DATES</p> <p>Full papers for publication in the conference proceedings and oral presentation February 1, 2010</p> <p>Extended abstracts for discussion session February 1</p> <p>Extended abstract for poster presentation June 7</p> <p>Workshop presentation February 19</p> <p>Registration deadlines</p> <p>Early registration – until May 28, 2010</p> <p>Online registration – until June 25</p> <p>On-the-spot registration commences July 6</p> <p>The GI Forum pass also provides access to the AGIT Symposium and AGIT Expo.</p>										
6-9 July “NEW”	Addis Ababa, Ethiopia	<p>UN Spider Regional Workshop</p> <p>Contact: Mr. Michael Leitgab E-mail: michael.leitgab@unoosa.org</p>										
9 – 11 July	Girona, Spain	State of the Map 2010 -4th Annual International OpenStreetMap Conference										
11-12 July	San Diego	ESRI Business GIS Summit										
12 – 16 July	San Diego	<p>30th Annual ESRI User Conference</p> <p>ESRI invites users to tell their GIS story by sharing their experiences with GIS and presenting during a moderated session at the 2010 ESRI International User Conference (ESRI UC).</p>										
26 – 28 July	Kuala Lumpur, Malaysia	<p>MapAsia 2010 & ISG 2010</p> <p>Email</p> <p>Important Dates to Remember</p> <table style="width: 100%; border: none;"> <tr> <td style="width: 80%;">Abstract Submission</td> <td style="text-align: right;">Call for Papers</td> </tr> <tr> <td></td> <td style="text-align: right;">May 24, 2010</td> </tr> <tr> <td>Abstract Acceptance Intimation</td> <td style="text-align: right;">June 04, 2010</td> </tr> <tr> <td>Submission of Full Papers</td> <td style="text-align: right;">June 30, 2010</td> </tr> <tr> <td>Author Registration</td> <td style="text-align: right;">June 22, 2010</td> </tr> </table> <p>For any queries related to papers, contact Simmi Sinha.</p>	Abstract Submission	Call for Papers		May 24, 2010	Abstract Acceptance Intimation	June 04, 2010	Submission of Full Papers	June 30, 2010	Author Registration	June 22, 2010
Abstract Submission	Call for Papers											
	May 24, 2010											
Abstract Acceptance Intimation	June 04, 2010											
Submission of Full Papers	June 30, 2010											
Author Registration	June 22, 2010											
26 – 30 July	Vancouver, BC Canada	GeoWeb 2010 Conference Update										
28 – 30 July	Baltimore, MA USA	<p>Intelligent Spatial Decision Analysis (ISDA '10) & International Symposium on Intelligent Decision Technologies (IDT'10)</p> <p>Important dates</p> <p>22 March 2010: *Notification of acceptance</p> <p>19 April 2010: *Deadline for Camera Ready Papers</p> <p>For further information or questions, please send an e-mail to: Beniamino Murgante (University of Basilicata, Italy) or idt-10@kesinternational.org</p>										
August 2010												
2 – 4 August	Brisbane, Australia	<p>GITA 2010 - Australia and New Zealand</p> <p>GITA 2010 is the premier geospatial technologies conference in Australia and New Zealand. This year's program will focus on “Smarter infrastructure for a sustainable future” with particular focus on water reform, smart grid, critical infrastructure protection and emergency management, transportation and safety, and telecommunications and will feature the launch of two world class technology breakthroughs!</p> <p style="text-align: right;">CONTACT</p>										
9 – 12 August UPDATED	Kyoto, Japan	<p>ISPRS Commission VIII symposium</p> <p>International Society for Photogrammetry and Remote Sensing</p> <p>Contact: (Ms. Kumiko Sekiguchi, Ms. Juri Hikiba)</p> <p>The deadline for this full paper submission was extended to</p>										

[Back to contents](#)

		June 6
23 August – 1 September	Bangkok, Thailand	<p>Call for Applications: Workshop on Asian Coastal Cities The Southeast Asia START Regional Center and the East-West Center has issued a Call for Applications for an upcoming International Workshop to address the risks of flooding in Asian Megacities. With support from the Asia-Pacific Network for Global Change Research (APN) the Workshop on Climate Change Vulnerability Assessment and Urban Development Planning for Asian Coastal Cities will be held on August 23 to September 1. The Workshop objectives include:</p> <ol style="list-style-type: none"> 1) The development of capacity on the part of urban planners, managers, and researchers in climate change risk and vulnerability assessment and its application to urban development planning and governance. 2) The promotion of locally led risk and vulnerability research in Asian coastal cities that is linked to user needs. 3) The development of partnerships between researchers, planners and policy makers that encourage communities of knowledge for vulnerability assessment in each participating city. <p>The Workshop invites researchers, urban planners and managers, practitioners, professionals and policymakers interested in and working on topics related to the workshop topics to submit an Application to the Southeast Asia Regional Center by 1 March 2010.</p> <p>The application must include: A curriculum vitae for each applicant A written letter of interest describing the relevance of the workshop to the applicant/team’s academic or professional work and expected benefits of participation All materials should be submitted in English For more information, review the Call for Applications or contact..</p>
25 – 7 August “NEW”	Hue City, Vietnam	<p>Asian Symposium on Disaster Impact and its Assessment in Asia The Asian Symposium on Disaster Impact and Its Assessment in Asia is being organized under the aegis of the European Commission funded FP6 MICRODIS Integrated Project (www.microdis-eu.be). Disasters in Asia have been severely affecting the local capacities. This requires multi-prong actions for prevention, mitigation, assessment, and management in an enabling environment - with the goal of sustainability. The multi-dimensional nature of disaster impact requires multi-disciplinary and multinational cooperation, which is the primary goal of the MICRODIS Project. Therefore, the Asian symposium is aimed at:</p> <ol style="list-style-type: none"> 1. Bringing together multiple stakeholders: academics, bureaucrats, researchers, professionals, UN representatives, NGOs and others to discuss current issues on disaster impact and assessment. 2. Presenting multi-country, multi-discipline scenario on disaster impacts that emerged out of MICRODIS empirical studies. 3. Sharing evidence-based knowledge and methodologies that facilitate the development of prompt operational strategies for the future. <p>Abstract deadline & full paper submission date HAS passed.</p>
September 2010		
1-3 September	Paris	<p>PCV2010 PCV 2010 will be held in next year. It is an ISPRS selective conference covering all the aspects of computer vision and image</p>

[Back to contents](#)

		<p>analysis dealing with geographic data. PCV focuses on the processing of images and 3D point clouds, acquired from satellites, aircraft or from street level acquisition systems.</p> <p>Important dates: 1 March, 2010: for peer reviewed papers; 1 April: abstracts of non peer-reviewed papers. 31 August is tutorial day. Conference dates are 1-3 September, 2010. Visit the Website for further details.</p>
6-9 September “UPDATED”	Barcelona, Spain	<p>FOSS4G 2010 A listing of <i>Abstracts & Presentations</i> is available. Aug 2010, Completed program available 6-7 Sep 2010, FOSS4G Workshops – Workshop webpage 7-9 Sep 2010, FOSS4G Presentations and Tutorials - webpage 10 Sep 2010, FOSS4G Code Sprint Contact Conference Chair for further details (Lorenzo Becchi)</p>
20-3 September	Gaeta, Italy	<p>The 10th Anniversary International Scientific and Technical Conference "From imagery to map: digital photogrammetric technologies". <i>More information about the conference will be available soon on the official site of the Conference.</i> Contact</p>
22 September	Washington, DC	<p>LI GeoCloud 2010 The first conference dedicated to geospatial cloud computing Call for presentations now open If you would like to submit a presentation for consideration, please use our submittal form to provide an outline of the topic you would like to present. Preference will be given to sponsors of the conference. Registration for the conference will be \$595 but early registration will be held June 1 through August 30. The cost for early registration will be just \$495.</p>
22–6 September	Toyama, Japan	<p>Asia-Pacific Radio Science Conference 2010 (AP-RASC10) Contact</p>
28-30 September “NEW”	Vienna, Austria	<p>Geospatial intelligence Summit Key topics:</p> <ul style="list-style-type: none"> • Developing an effective GIS strategy • How to maximise co-operation across national defence and security organisations • How to create a national spatial data infrastructure • Moving from geo-information to geo-intelligence • Developing an open enterprise architecture • Achieving true interoperability on a national and international level • Meet the needs of multiple stakeholders • Learn about the evolving relationship between military, intelligence and civilian agencies
30 September 1 October “NEW”	Kiev, Ukraine	<p>IV Ukrainian Scientific and Practical Conference “National Mapping: State, Problems, and Development Prospects” (National Mapping - 2010) Paper deadline: 30 June 2010 Registration deadline: 15 September 2010 Organized by: State Service of Geodesy, Cartography and Cadastre of Ukraine, Institute of Geography of National Academy of Sciences of Ukraine, Ukrainian Cartographic Association and GIS-Association of Ukraine Sessions. The following topics will be addressed: 1. National infrastructure of geospatial data. 2. Remote sensing of the Earth. 3. Thematic and atlas mapping.</p>

[Back to contents](#)

		<p>4. Geographical information systems (digital cartography, cartographical information in Internet, digital maps in navigation, navigating systems).</p> <p>5. The copyright in cartography.</p> <p>6. History of cartography.</p> <p>Conference working languages - Ukrainian, Russian, English.</p> <p>The presented papers will be published in the proceedings of the Conference.</p> <p>Registration payment: 20 Euros includes entry to all sessions, proceedings materials, meals, coffee breaks.</p> <p>For all questions: contact: Oksana Degtyar or <odegtyar@rambler.ru> or Victoria Molochko,</p>
October 2010		
4 – 6 October “NEW”	Katmandu, Nepal	<p>Benefiting from Earth Observation Contact: symposium2010@icimod.org</p>
10 – 15 October	Songdo Convensia, Incheon, Republic of Korea	<p>SPIE Asia-Pacific Remote Sensing Monitoring the Human Impact on the Natural Environment of the Coastal Zone 10-15 October 2010</p>
12 – 14 October “NEW”	Bonn, Germany	<p>UN-Spider Workshop on Disaster Management & Space Technology Contact: Ms. Natalie Epler, e-mail: natalie.epler@unoosa.org</p>
19 – 22 October	Singapore	<p>GSDI 12 World Conference – Realising Spatially Enabled Societies In conjunction with the 16th PCGIAP Annual Meeting. Call for Papers ALSO: there will be a full day pre-conference workshop for PhD students pursuing research on SDI related topics which will be similar to the highly successful workshop held in conjunction with GSDI 11.</p>
24-27 October	Stellenbosch, Cape Town, South Africa	<p>22nd International CODATA Conference Theme: Scientific Information for Society: Scientific Data and Sustainable Development Abstract deadline is now closed: 30 April 2010.</p>
25-29 October	Addis Ababa, Ethiopia	<p>8th International Conference of the African Association of Remote Sensing of the Environment (AARSE)-2010 Theme: Earth Observation for Africa's Development Agenda 2010 Abstract deadline: 30 April 2010. Send to Final paper submission: 1 September 2010. The four major scientific sub-themes of the conference are:</p> <ul style="list-style-type: none"> • Food and Water Security • Energy Resources • Disaster Risk Reduction • Marine and Coastal Management <p>Conference sub-themes of a more operational nature are:</p> <ul style="list-style-type: none"> • Capacity-building: achievement and challenges • Spatial Data Infrastructure, SDI • Space Policy in Africa • National and regional programs and projects • Products
November 2010		
31 October - 3 November	Denver, Colorado	US - GSA Annual Meeting
3-4 November “NEW”	Berlin, Germany	5th 3D Geoinfo Conference

[Back to contents](#)

5 – 6 November	Kaohsiung, Taipei	<p>ASIA GIS 2010 Contact us</p> <p>The theme for this conference is GIS and Cloud Computing. Cloud computing is a hot topic in 2010 and GIS is moving to the cloud computing paradigm. Invited keynote speakers will present the future trend of cloud computing and its application in GIS.</p> <p>Key Dates: Deadline for Early Bird Registration 31 August Paper Submission 31 August</p>
8 – 11 November	London	<p>The 5th International Conference for Internet Technology and Secured Transactions (ICITST-2010)</p> <p>Technical Co-Sponsored by IEEE UK/RI Communications Chapter, Contact</p> <p>IMPORTANT DATES Early Registration Deadline: January 01 to July 31, 2010 Late Registration Deadline: July 31 to November 08, 2010</p>
9 – 11 November	Taipei, Taiwan	<p>2010 The 7th International Symposium on Cadastral Survey.</p> <p>Main Topic: The Development of Cadastral Survey in New Generation.</p> <p>Contacts: Geographic Information Systems Research Center of Feng Chia University. Email: joy@gis.tw</p>
15 – 19 November	Orlando, Florida	<p>ASPRS/CaGIS 2010 Specialty Conference in conjunction with a special joint meeting of ISPRS Technical Commission IV & AutoCarta 2010</p> <p>Important Dates May 1, 2010 - Workshop proposals due May 12, 2010 - Abstracts for papers and posters due June 15, 2010 - Notice of acceptance of all proposals August 15, 2010 - Presenter registration due September 13, 2010 - Final papers due (to be considered for publication)</p>
November - Dec 2010		
Date not fixed	Melbourne, Australia	<p>17th Asia Pacific Regional Space Agency Forum</p>
28 November – 3 December	Sydney Australia	<p>OGC's Meeting on Business Value of Geospatial Standards</p> <p>The Open Geospatial Consortium (OGC) has announced the event, Deriving business value from geospatial standards to be held on June 17, 2010 at the NOAA Silver Spring offices in Maryland. OGC invites government officials, policy makers, senior managers, as well as sales and marketing professionals from across the industry to attend a series of business meetings during the event. The event is part of the OGC's quarterly Technical Committee and Planning Committee meetings. Steven Ramage, OGC's Executive Director, Marketing and Communications said, "I would like to invite professionals to attend a one-day business session at a TC/PC meeting. This invitation is open to OGC members and non-OGC members who want to learn more about the business value of geospatial technology. Silver Spring is the first such meeting and more one-day business sessions are planned for the OGC meetings in Toulouse, France in September and in Sydney, Australia in November-December 2010."</p>
1 – 3 December "NEW"	Valencia, Spain	<p>6th gvSIG Conference: Knowledge for change</p> <p>The call for papers is now open. As of today communication proposals can be sent to the email address where they will be evaluated by the scientific committee as to their inclusion in the conference program. There are two types of communication: paper or poster. Information regarding to regulations on communication</p>

		presentations can be found in the reports section . Abstracts will be accepted until September 21st.
December 2010		
22 December	Kyoto, Japan	Japan - Topic Maps Japan 2010
January 2011		
18-21 January	Hyderabad, India	MapWorld Forum 2011 Contact NOTE NAME CHANGE TO: GEOSPATIAL WORLD FORUM 2011
April 2011		
10 – 15 April	Sydney, Australia	34th International Symposium on Remote Sensing of Environment
November 2011		
14 – 18 November	Santiago, Chile	UGI 2001 International Geographic Union “Regional Geographic Conference” Contact Brochure & Call for Papers
August 2012		
24 August – 3 September	Melbourne, Australia	XXII International Society for Photogrammetry & Remote Sensing Congress Email: jsprs2012@icms.com.au
2014		
	Malaysia	Malaysia will be hosting the (International Federation of Surveyors) FIG Congress in 2014. The decision was taken at the recently concluded FIG Congress 2010 in Sydney, Australia.

[Back to contents](#)

To subscribe to SDI-AP, please do so [online](#). To contact please [email](#) the editors. [Global Spatial Data Infrastructure Association](#).

Please mention SDI-AP as a source of information in any correspondence you may have about items in this issue.

DISCLAIMER: The Editor and Web Host will not be held liable for any errors, mistakes, misprints or incorrect information.

Copyright © 2010. All rights reserved.



[Back to contents](#)