

2014 GSDI Small Grant Project Final Report

Title of Project/Activity

Introducing EnviroSDI for Armenia: Piloting publicly accessible online platform

Focal Point Institution

Institute of Archaeology and Ethnography, National Academy of Sciences

Contact Person (business street address, phone/fax, email, and website)

Armen Asryan, Address – 24a Saryan str., apt.30, Yerevan, 0002, Armenia. Tel.: (+374 94) 091945. E-mail: armen.asryan@gmail.com.

List of Collaborators (contact information)

Anna Khechoyan, Junior Researcher, Institute of Archaeology and Ethnography, National Academy of Sciences. Charents str. 15, Yerevan, 0025, Republic of Armenia

Summary of Deliverables as per Grant Proposal

There are three key deliverables: a) Deployment of the SDI platform, b) Publishing of base maps and thematic maps, c) Conveying the results to the target audience (beneficiaries).

The deliverables included:

- Online, interactive, open-source mapping SDI platform with crowd-mapping capability (with the development and testing of the SDI platform as sub-components),
- Developed and published maps (SDI, online with public access).
- Inventory of the existing spatial data existing in the public domain,
- Data collection in the field, and
- Publication of the base-maps and data collected in the field.

Itemized Use of Project's labor hours

Labour hours: 360 hours in total over 7.5 months period for all components.

Other in-kind contribution included: working space, computer and mobile equipment, landline internet connection as well as GPRS internet connections for the fieldwork.

Timeline of the Project

The project was implemented between May 15 to December 31, 2014, with most activity in August-November period.

Potential or Actual Follow-up Activities

The Project proved to have significant potential for further development. Largely, due to the following factors:

a) The potential use of Crowdmapping technology, Ushahidi/Crowdmap in this case, and platforms per se by wider public.

b) Preliminary agreement with the Center for Ecological-Noosphere Studies of the National Academy of Sciences RA to join efforts for advancing the use of crowdmapping in Armenia on top of their SDI platform in 2015 (starting from February, 2015).

c) Development of a joint project in 2015 (starting from February, 2015); with the Center for Ecological-Noosphere Studies on collaborative SDI with Armenia and Tajikistan as beneficiary countries.

Unanticipated obstacles you encountered

There were not any technical obstacles encountered. Rather, I would like to mention that fresh information that was discovered during the implementation and later obtained during the meeting with the representative of the Center for Ecological-Noosphere Studies (CENS) of the National Academy of Sciences RA on their current work on the SDI (including their achieved results). In the view of this new information the Grantee decided, that in the interest of the Project, it would be meaningful to join efforts in 2015 to complement their existing SDI with Crowdmapping component, based on the experience gained during the current project.

Do you think you have reached your goal?

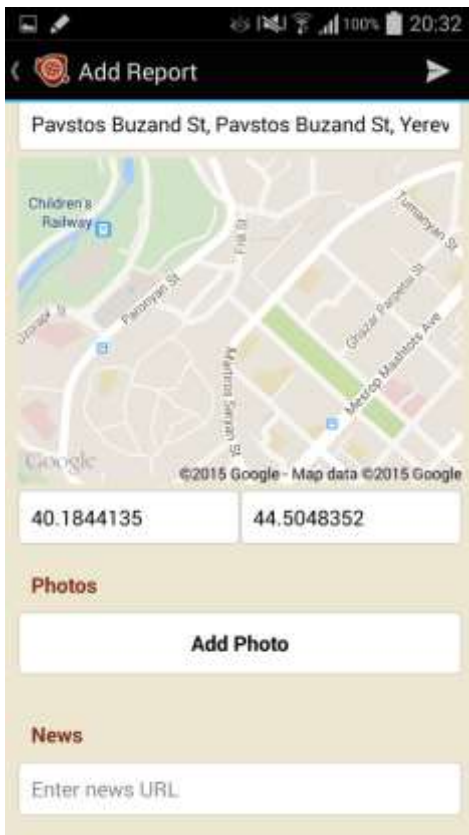
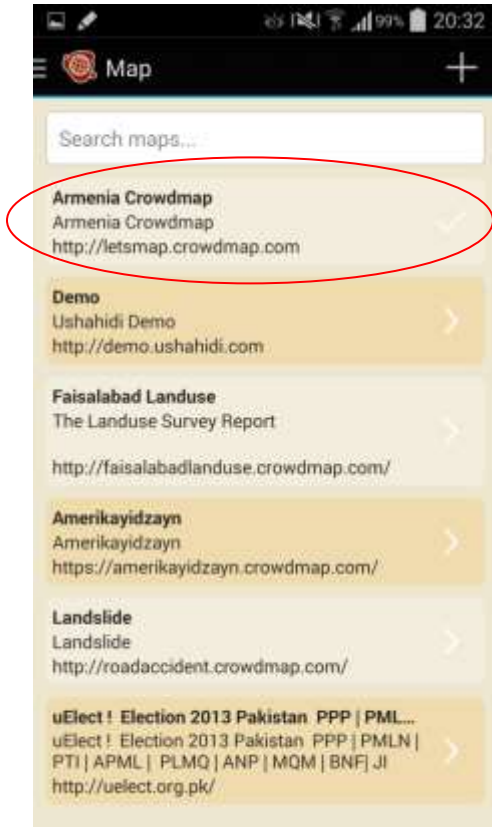
Yes, with some modifications to the Project (as described above). Specifically, regarding the crowd mapping part. Although, it was technically feasible to complete a standalone SDI platform for the Project, I have decided rather to concentrate more on the crowdmapping part with certain imbedded SDI layers. There are some limitations like the download of shapefiles is available in KML file format only, and there are limitations with managing categories of georeports uploaded from the field. These limitations are planned to be addressed in 2015.

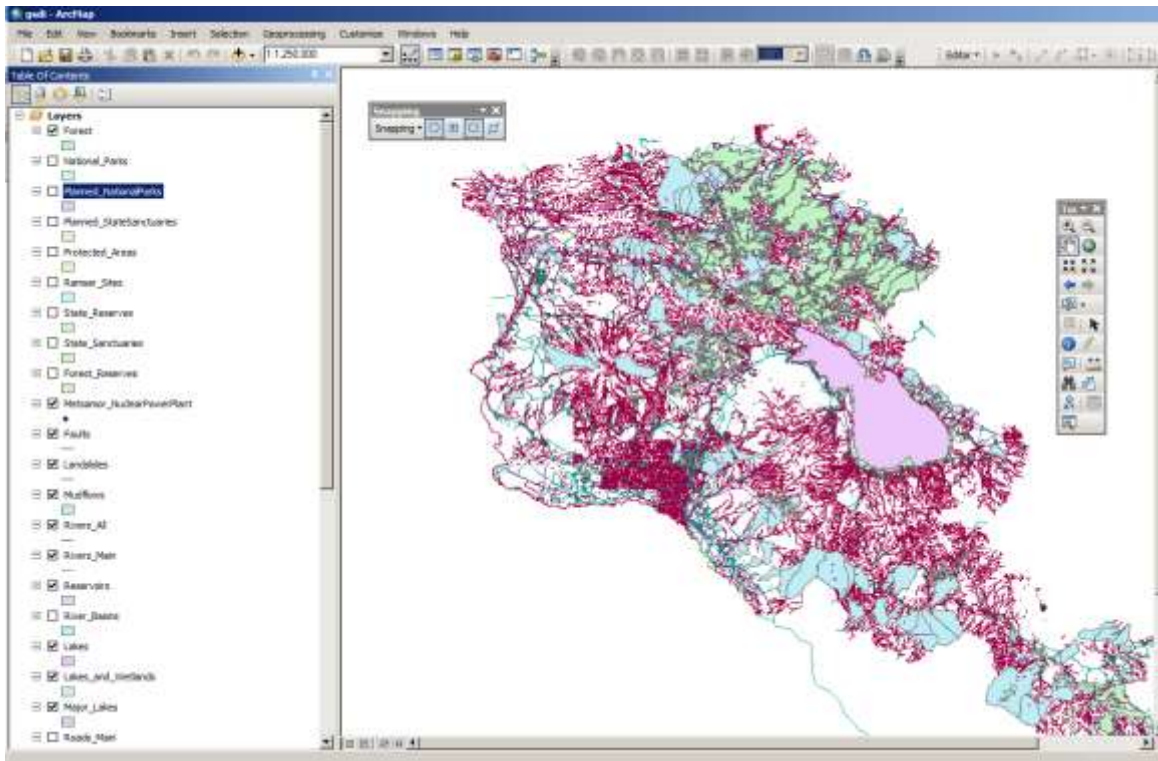
The platform is now temporarily (up to one month) taken offline for maintenance, cleanup and fine-tuning. And will be back online for a wider testing involving pool of volunteers with Ushahidi applications installed onto their smartphones. The platform is located at:
<http://letsmap.crowdmap.com/>

Photos, maps, graphics, or illustrations of project activities

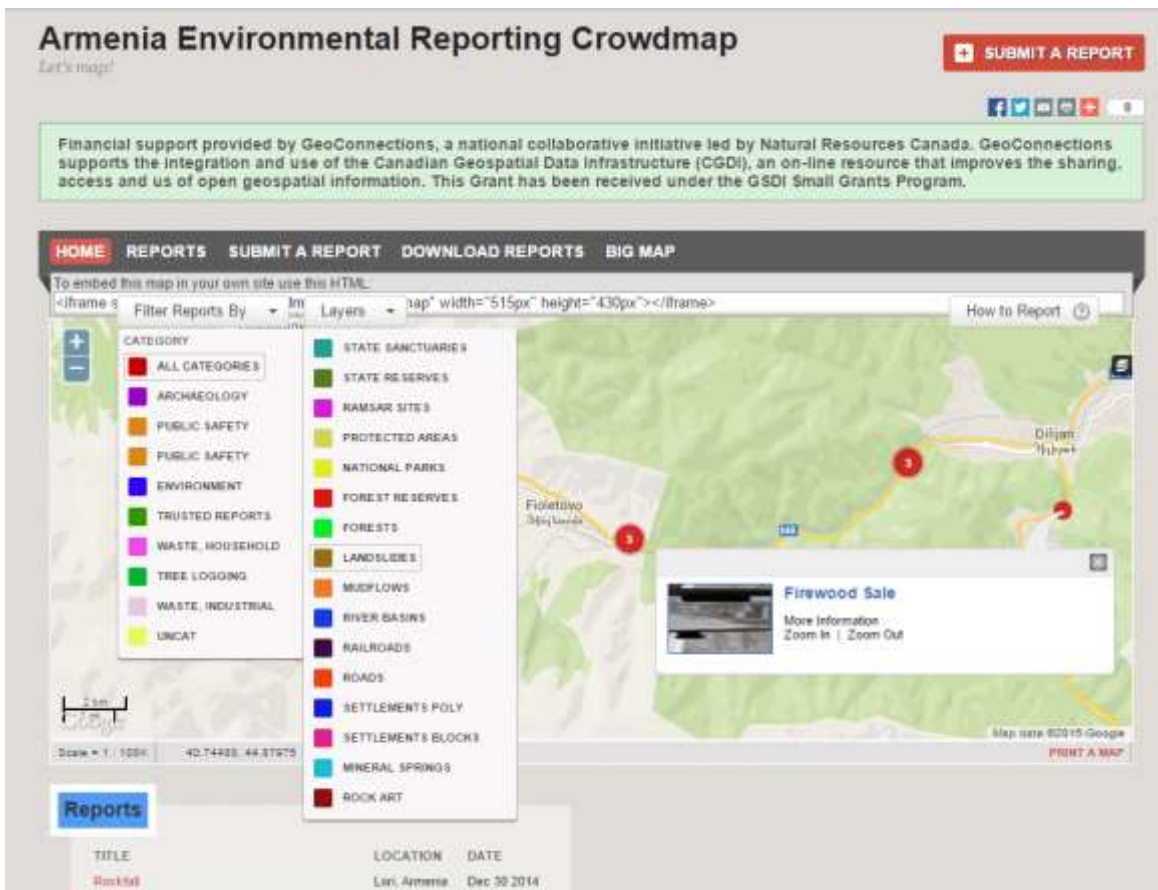
Include in the report or as attachments in .jpg format

Ushahidi's application for smartphones (android) which is used for field data collection. Screenshots below illustrating the data collection interface.





Working with SDI layers in ArcGIS before uploading them onto Ushahidi server.



Ushahidi based crowdmap interface with layer and category menus open.

Armenia Environmental Reporting Crowdmap

Let's map!


[SUBMIT A REPORT](#)

HOME **REPORTS** SUBMIT A REPORT DOWNLOAD REPORTS BIG MAP

Firewood Sale [Edit]

12:38 Dec 30 2014 Maxim Gorky St, Maxim Gorky St, Armenia **UNVERIFIED**

Tree logging




Description
On Dilijan town roadside. Firmed with caution. Not know if it is illegal. However, the it is sold in the heart of a protected area.

Credibility:

Leave A Comment
Armen Asryan

Comments:

Security Code:
20 + 1 =



Additional Reports

- Cons Waste** 12:44 Dec 30 2014 Tashish, Armenia, 5.82 kms
- Waste Dump** 12:51 Dec 30 2014 Dilijan, Dilijan, Armenia, 5.92 kms

Viewing field reports online

Armenia Environmental Reporting Crowdmap

Get Help: [Wiki](#) [FAQ's](#) [Forum](#) English (US) Search Reports

[Manage Your Public Listing](#)

Dashboard **Reports** Messages Stats Addons Admin Map Settings Manage Users

[View Reports](#) **Create Report** [Comments](#) [Download Reports](#) [Unload Reports](#) [Delete all reports](#)

Edit Report

SAVE REPORT SAVE & CLOSE SAVE & ADD NEW CANCEL - PREVIOUS NEXT -


Form (Select A Form Type)
Default Form

Title *
Construction waste

Description (Include as much detail as possible. *
Allowed HTML tags: , <i>, <u>, <u>, <u>, <u>, <u>, <u>, <u>. Images are only allowed from: www.youtube.com/related, player.vimeo.com/related, or soundcloud.com/player.

A pile of construction waste on the roadside.

Incident Location Latitude: 40.776338 Longitude: 44.56092191 [Wider Map](#)



Working with field reports

Layers	Color	Actions
Forest Reserves KML URL: https://2ecd17ef76a321f3680f-9a0a6e2cf992d84f23080833b4e95ed2.ssl.cf2.rackcdn.com/letsmap/1418471111Forest_Reserves_LayerToKML.kml		Edit Visible Delete
Forests KML URL: https://2ecd17ef76a321f3680f-9a0a6e2cf992d84f23080833b4e95ed2.ssl.cf2.rackcdn.com/letsmap/1418471202Forest_LayerToKML.kml		Edit Visible Delete
Landslides KML URL: https://2ecd17ef76a321f3680f-9a0a6e2cf992d84f23080833b4e95ed2.ssl.cf2.rackcdn.com/letsmap/1420213445Landslides_LayerToKML.kml		Edit Visible Delete
Mineral Springs KML URL: https://2ecd17ef76a321f3680f-9a0a6e2cf992d84f23080833b4e95ed2.ssl.cf2.rackcdn.com/letsmap/1422475029Mineral_Water_Springs_LayerT		Edit Visible Delete

SDI layers. These may be activated on the map or download as KML files.

For more information about the GSDI or to subscribe to the GSDI News List, please see <http://gsdi.org>. For questions about this report, please contact grants@gsdi.org.